

INDUSTRIAL



PROLAMSA provides high quality steel solutions to its partners. For over six decades, innovation and customer satisfaction have been our priority.





PROLAMSA
- ESCOBEDO, N.L., MÉX.



PROLAMSA
- MONTERREY, N.L., MÉX.



PROLAMSA
- TEPEJI DEL RÍO, HGO., MÉX.



PROLAMSA INC
- LAREDO, TX, USA



AXIS PIPE & TUBE
- BRYAN, TX, USA



PROSANKIN
- PESQUERÍA, N.L., MÉX.



OUR NETWORK

-  HEADQUARTERS
-  MANUFACTURING FACILITIES
-  DISTRIBUTION CENTER
-  CUSTOMER SERVICE





TAILOR - MADE PRODUCTS

WE CAN PRODUCE ANY
REQUIRED SHAPE.

TUBING:

- Special Shapes
- Round
- Square
- Rectangular
- Oval
- Elliptical

STANDARD SPECIFICATION

- ASTM A513 Type 1 & 2
- ASTM A500 Grade A, B or C
- ASTM A787
- ASTM A512 DOM Tube

RAW MATERIAL:

- Hot-rolled steel
- Hot-rolled pickled steel
- Cold-rolled steel
- Galvanized
- Aluminized
- Dual Phase Steel

FROM LOW-CARBON STEEL
TO MARTENSITIC STEEL

HIGH PRECISION



AUTOMOTIVE

High quality products for
Tier 2 and Tier 3 suppliers.

APPLICATIONS:

- SEATING STRUCTURES
- CROSS MEMBERS
- HINGES
- HEAD RESTS
- TOWING COMPONENTS
- STEERING WHEEL





FURNITURE

Products ready for your
assembly line.

APPLICATIONS:

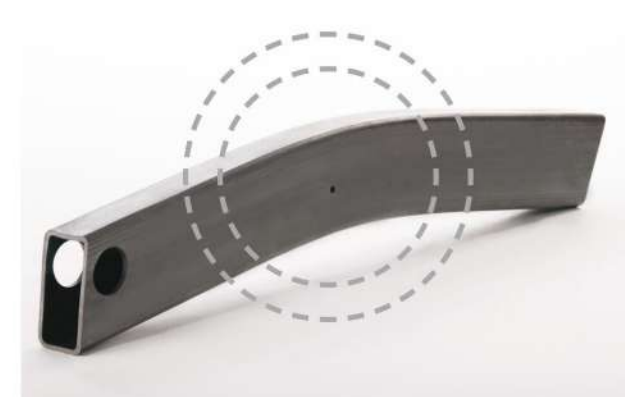
- OFFICE
- MEDICAL USE
- HOME
- RECREATIONAL

MAJOR EQUIPMENT

Qualified manufacturer of **ROPS** and **FOPS** (Roll Over and Falling Object Protective Structures).

APPLICATIONS:

- TRACTORS/AGRICULTURAL EQUIPMENT
- TRAILERS
- MINING EQUIPMENT





MINOR EQUIPMENT

Technical consultation during product design phase.

APPLICATIONS:

- HVAC
- OUTDOORS
- TRANSPORT
- TRANSFORMERS (HEAT EXCHANGERS)

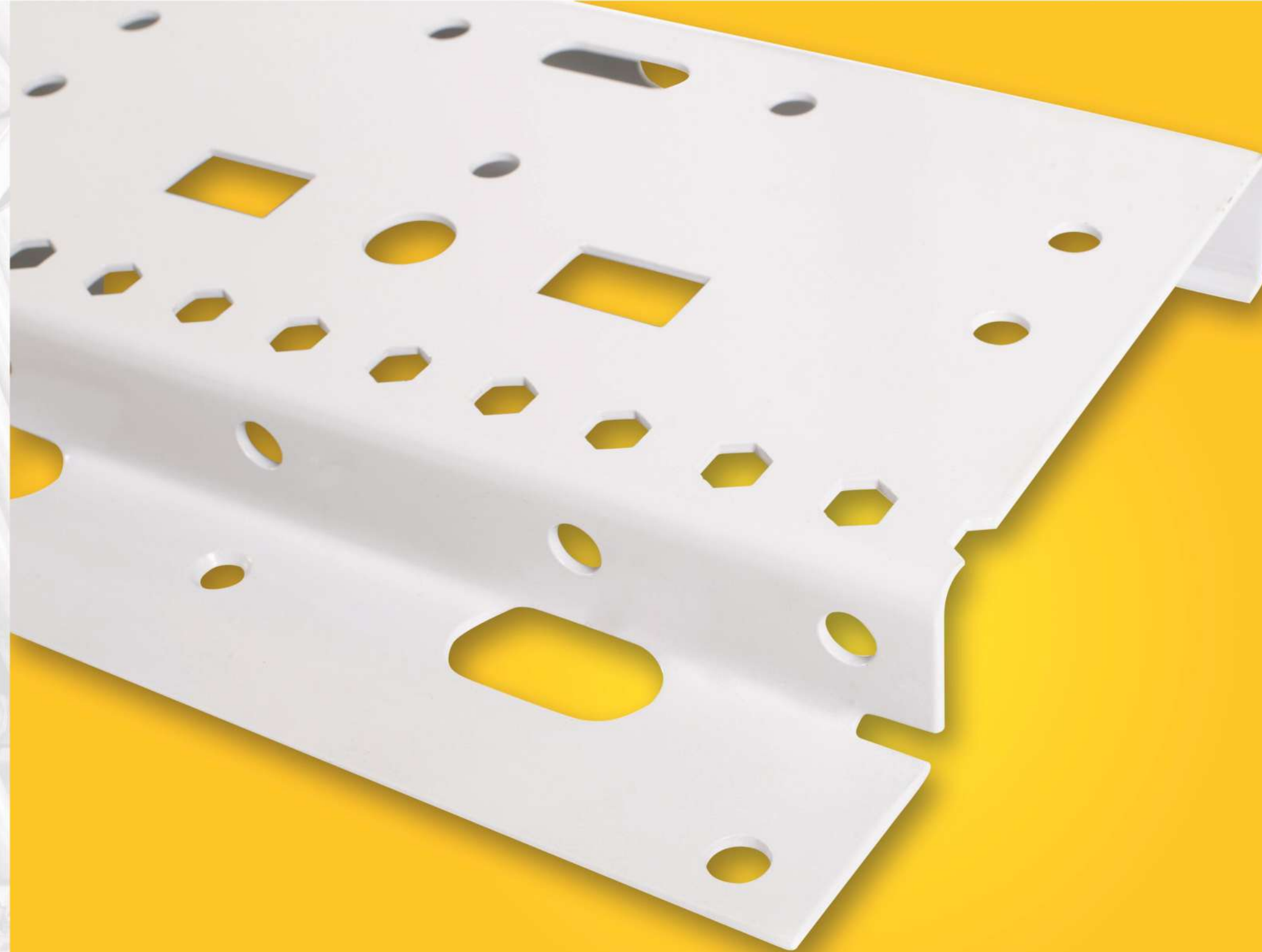


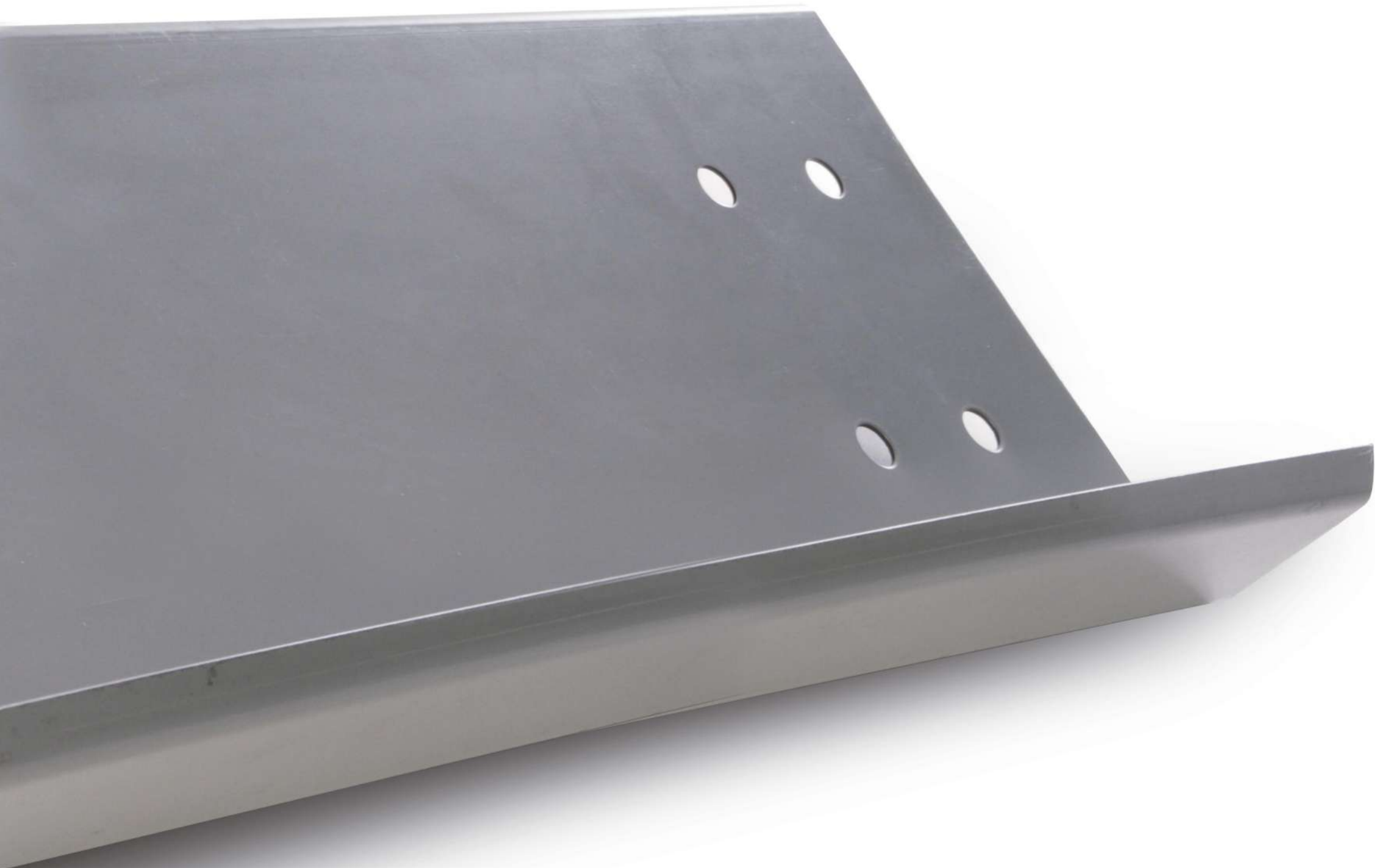
STORAGE

New products according to requirements.

APPLICATIONS:

- CONTAINERS
- SHELVES/EXHIBITORS
- CONVEYOR BELTS
- MATERIAL HANDLING SYSTEMS





CONSTRUCTION

HSS and steel components
for your structure.

APPLICATIONS:

- STRUCTURES
- DOORS AND WINDOWS
 - FENCES
 - POLES
- GREENHOUSES
- SCAFFOLDS



SOLAR ENERGY

Our galvanized products are perfect for the construction of Solar Parks

APPLICATIONS:

- SOLAR TRACKERS AXLES
- SOLAR PANEL FRAMES
 - SUPPORT POLES
 - SOLAR RACKS
- SOLAR PANEL MOUNTS



ROUND

OD		NOMINAL WALL THICKNESS																												OD							
		mm														in																mm					
mm	in	0.45	0.61	0.76	0.80	0.91	1.06	1.21	1.52	1.90	2.28	2.50	2.66	3.04	3.42	3.80	4.00	4.18	4.78	5.50	5.69	6.00	6.35	7.00	7.94	9.53	10.31	10.97	12.70	14.27	15.09	15.88	in	mm			
		0.0177	0.0240	0.0299	0.0315	0.0359	0.0417	0.0478	0.0598	0.0747	0.0897	0.0984	0.1046	0.1196	0.1345	0.1495	0.1575	0.1644	0.1880	0.2165	0.2242	0.2362	0.2500	0.2756	0.3125	0.3750	0.4060	0.4320	0.5000	0.5620	0.5940	0.6250					
		26	24	22	20	19	18	16	14	13	12	11	10	9	8	3/16	4	1/4	5/16	3/8	1/2	5/8															
10.00	0.394																																			0.394	10.00
11.00	0.440																																			0.440	11.00
12.00	0.480																																			0.480	12.00
12.70	0.500																																			0.500	12.70
13.00	0.520																																			0.520	13.00
14.00	0.560																																			0.560	14.00
15.00	0.600																																			0.600	15.00
15.88	0.625																																			0.625	15.88
17.00	0.669																																			0.669	17.00
18.00	0.720																																			0.720	18.00
19.00	0.750																																			0.750	19.00
20.00	0.800																																			0.800	20.00
21.30	0.840																																			0.840	21.30
22.00	0.880																																			0.880	22.00
22.23	0.875																																			0.875	22.23
25.40	1.000																																			1.000	25.40
26.67	1.050																																			1.050	26.67
28.00	1.120																																			1.120	28.00
30.00	1.181																																			1.181	30.00
31.75	1.250																																			1.250	31.75
33.40	1.315																																			1.315	33.40
38.10	1.500																																			1.500	38.10
42.16	1.660																																			1.660	42.16
44.45	1.750																																			1.750	44.45
47.63	1.875																																			1.875	47.63
48.26	1.900																																			1.900	48.26
50.80	2.000																																			2.000	50.80
57.15	2.250																																			2.250	57.15
60.33	2.375																																			2.375	60.33
63.50	2.500																																			2.500	63.50
73.00	2.875																																			2.875	73.00
76.20	3.000																																			3.000	76.20
88.90	3.500																																			3.500	88.90
101.00	4.000																																			4.000	101.00
114.30	4.500																																			4.500	114.30
127.00	5.000																																			5.000	127.00
139.70	5.500																																			5.500	139.70
146.00	5.748																																			5.748	146.00
152.40	6.000																																			6.000	152.40
168.30	6.625																																			6.625	168.30
219.08	8.625																																			8.625	219.08
273.05	10.750																																			10.750	273.05
323.85	12.750																																			12.750	323.85
355.60	14.000																																			14.000	355.60
406.40	16.000																																			16.000	406.40
mm	in	26	24	22	20	18	14	13	12	9	8	3/16	4	1/4	5/16	3/8	1/2	5/8	in	mm																	
		0.0177	0.0240	0.0299	0.0315	0.0359	0.0417	0.0478	0.0598	0.0747	0.0897	0.0984	0.1046	0.1196	0.1345	0.1495	0.1575	0.1644	0.1880	0.2165	0.2242	0.2362	0.2500	0.2756	0.3125	0.3750	0.4060	0.4320	0.5000	0.5620	0.5940	0.6250					
		0.45	0.61	0.76	0.80	0.91	1.06	1.21	1.52	1.90	2.28	2.50	2.66	3.04	3.42	3.80	4.00	4.18	4.78	5.50	5.69	6.00	6.35	7.00	7.94	9.53	10.31	10.97	12.70	14.27	15.09	15.88					

Production capability

SQUARE

DIMENSION		NOMINAL WALL THICKNESS																				DIMENSION										
mm	in	0.45	0.61	0.76	0.91	1.06	1.21	1.52	1.90	2.28	2.66	3.04	3.42	3.80	4.18	4.76	5.69	6.35	7.94	9.53	10.16	10.31	10.97	11.07	11.13	12.70	14.27	15.09	15.87	mm	in	
		0.0177	0.0240	0.0299	0.0359	0.0417	0.0478	0.0598	0.0747	0.0897	0.1046	0.1196	0.1345	0.1495	0.1644	0.1880	0.2242	0.2500	0.3125	0.3750	0.4000	0.4060	0.4320	0.4360	0.4380	0.5000	0.5620	0.5940	0.6250			
		26	24	22	20	19	18	16	14	13	12	11	10	9	8	3/16	4	1/4	5/16	3/8							1/2			5/8		
10.00	0.3937																													0.3937	10.00	
12.70	0.500																													0.500	12.70	
15.88	0.625																													0.625	15.88	
19.05	0.750																													0.750	19.05	
20.00	0.787																													0.787	20.00	
22.23	0.875																													0.875	22.23	
25.40	1.000																													1.000	25.40	
31.75	1.250																													1.250	31.75	
30.00	1.181																													1.181	30.00	
38.10	1.500																													1.500	38.10	
44.45	1.750																													1.750	44.45	
50.00	1.969																													1.969	50.00	
50.80	2.000																													2.000	50.80	
57.15	2.250																													2.250	57.15	
60.00	2.362																													2.362	60.00	
63.50	2.500																													2.500	63.50	
76.20	3.000																													3.000	76.20	
88.90	3.500																													3.500	88.90	
101.60	4.000																													4.000	101.60	
114.30	4.500																													4.500	114.30	
127.00	5.000																													5.000	127.00	
152.40	6.000																													6.000	152.40	
203.20	8.000																													8.000	203.20	
254.00	10.000																													10.000	254.00	
304.80	12.000																													12.000	304.80	

RECTANGULAR

DIMENSION AXB				NOMINAL WALL THICKNESS																				DIMENSION AXB										
mm		in		0.61	0.76	0.91	1.06	1.21	1.52	1.90	2.28	2.66	3.04	3.42	3.80	4.18	4.76	5.69	6.35	7.94	9.53	10.31	10.97	12.70	14.27	15.09	15.87	mm		in				
				0.0240	0.0299	0.0359	0.0417	0.0478	0.0598	0.0747	0.0897	0.1046	0.1196	0.1345	0.1495	0.1644	0.1880	0.2242	0.2500	0.3125	0.3750	0.4060	0.4320	0.5000	0.5620	0.5940	0.6250							
				24	22	20	19	18	16	14	13	12	11	10	98	3/16	4	1/4	5/16	3/8							1/2			5/8				
10.00	15.00	0.394	0.591																										0.394	0.591	10.00	15.00		
25.00	15.00	0.984	0.591																										0.984	0.591	25.00	15.00		
25.40	12.70	1.000	0.500																										1.000	0.500	25.40	12.70		
31.75	19.05	1.250	0.750																										1.250	0.750	31.75	19.05		
35.00	15.00	1.378	0.591																										1.378	0.591	35.00	15.00		
35.00	20.00	1.378	0.787																										1.378	0.787	35.00	20.00		
38.10	12.70	1.500	0.500																										1.500	0.500	38.10	12.70		
38.10	25.40	1.500	1.000																										1.500	1.000	38.10	25.40		
40.00	20.00	1.575	0.787																										1.575	0.787	40.00	20.00		
44.45	19.05	1.750	0.750																										1.750	0.750	44.45	19.05		
50.80	25.40	2.000	1.000																										2.000	1.000	50.80	25.40		
57.15	19.05	2.250	0.750																										2.250	0.750	57.15	19.05		
63.50	31.75	2.500	1.250																										2.500	1.250	63.50	31.75		
63.50	38.10	2.500	1.500																										2.500	1.500	63.50	38.10		
80.00	30.00	3.150	1.181																										3.150	1.181	80.00	30.00		
76.20	25.40	3.000	1.000																										3.000	1.000	76.20	25.40		
76.20	38.10	3.000	1.500																										3.000	1.500	76.20	38.10		
76.20	50.80	3.000	2.000																										3.000	2.000	76.20	50.80		
101.60	38.10	4.000	1.500																										4.000	1.500	101.60	38.10		
101.60	50.80	4.000	2.000																										4.000	2.000	101.60	50.80		
101.60	76.20	4.000	3.000																										4.000	3.000	101.60	76.20		
152.40	101.60	6.000	4.000																										6.000	4.000	152.40	101.60		
203.20	101.60	8.000	4.000																										8.000	4.000	203.20	101.60		
254.00	152.40	10.000	6.000																										10.000	6.000	254.00	152.40		
304.80	101.60	12.000	4.000																										12.000	4.000	304.80	101.60		
304.80	203.20	12.000	8.000																										12.000	8.000	304.80	203.20		

Production capability

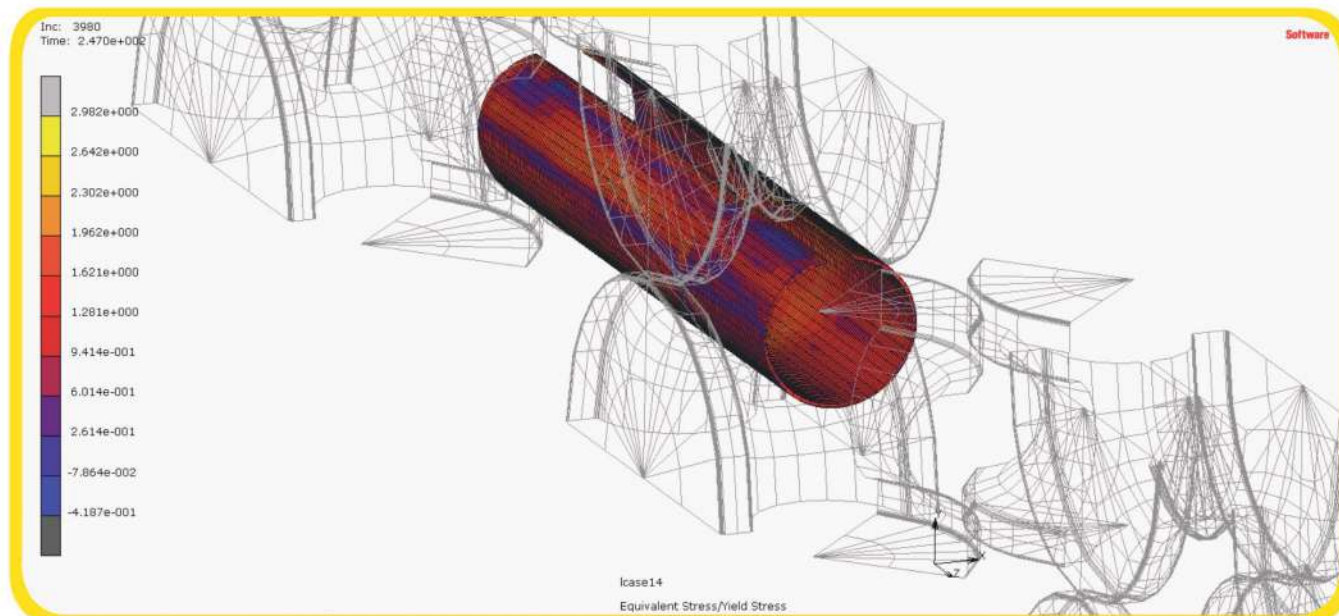
PROCESS CAPABILITY TUBE

PROCESS	TOLERANCE	THICKNESS	WEIGHT	LENGTH	DIMENSION		
					ROUND	SQUARE	RECTANGULAR
MAXIMUM VALUES							
LASER CUTTING	± 0.12 mm ± 0.005"	8.00 mm 0.32"	35.00 kg/m 25.00 lb/ft	8.50 m 28.30 ft	210.00 mm 8.27"	200.00 mm 7.88"	127.00 mm x 152.00 mm 5.00" x 6.00"
BENDING	165.00 mm In Radius 0.05 mm X axis length 0.05 mm Y axis bending 0.05 mm Z axis rotation	6.00 mm 0.24"		3.70 m 12.14 ft	152.00 mm 6.00" CLR 450.00 mm	100.00 mm 3.94" CLR 200.00 mm	120.00 mm x 80.00 mm 4.72" x 3.15" CLR 160.00 mm BENT EASY WAY
CUT-TO-LENGTH angle 90°, 60° & 45°	± 0.15 mm ± 0.006"	15.88 mm 0.625"		6.00 m 19.69 ft	406.40 mm 16.00"	304.8 mm 12.00"	203.20 mm x 406.40 mm 8.00" x 16.00"
DRILLING	0.05 mm 0.002" In Diameter	1.50 mm 0.06"					

CLR: Centerline Radius

PROCESS CAPABILITY SHEET & PLATE

PROCESS	TOLERANCE	THICKNESS	WEIGHT	WIDTH	LENGTH	PRESS TONNAGE
2D LASER CUTTING	± 0.05 mm ± 0.002"	25.00 mm 0.984"	1,700 kg 3,748 lb By Sheet	2,000 mm 78.74"	4,000 mm 157.48"	
BENDING CURTAIN	± 0.05 mm ± 0.002"	12.00 mm 0.472"		3,230 mm 127.17"		170 MT 189 T



In-house Design, Simulation and Manufacturing of Tooling

We certify our products based on the ASTM (American Society for Testing and Materials) regulations; we guarantee their dimensions and properties.

For raw materials	<ul style="list-style-type: none"> Hot rollig: ASTM A 1011 Cold rolling: ASTM A 1008 Galvanizing: ASTM A 653
For tube manufacturing	<ul style="list-style-type: none"> ASTM A 500 ASTM A 513 ASTM A 787



MECHANICAL PROPERTIES OF STEEL	ASTM A-513		ASTM A-500					
	COMMERCIAL QUALITY	HIGH RESISTANCE	ROUND TUBES			SQUARE AND RECTANGULAR		
	Type 1a, 1b and 2	HSLA G50	Grade A	Grade B	Grade C	Grade A	Grade B	Grade C
TENSION EFFORT, MIN, PSI, [MPA]	42 000 [290]	65 000 [448]	45 000 [310]	58 000 [400]	62 000 [425]	45 000 [310]	58 000 [400]	62 000 [425]
YIELD EFFORT, MIN, PSI, [MPA]	30 000 [207]	50 000 [345]	33 000 [230]	42 000 [290]	46 000 [315]	39 000 [270]	46 000 [315]	50 000 [345]
ELONGATION IN 2 INCHES [50MM], MIN%	15 CQ	22 HR	25 GA	23 GB	21 GC	25 GA	23 GB	21 GC

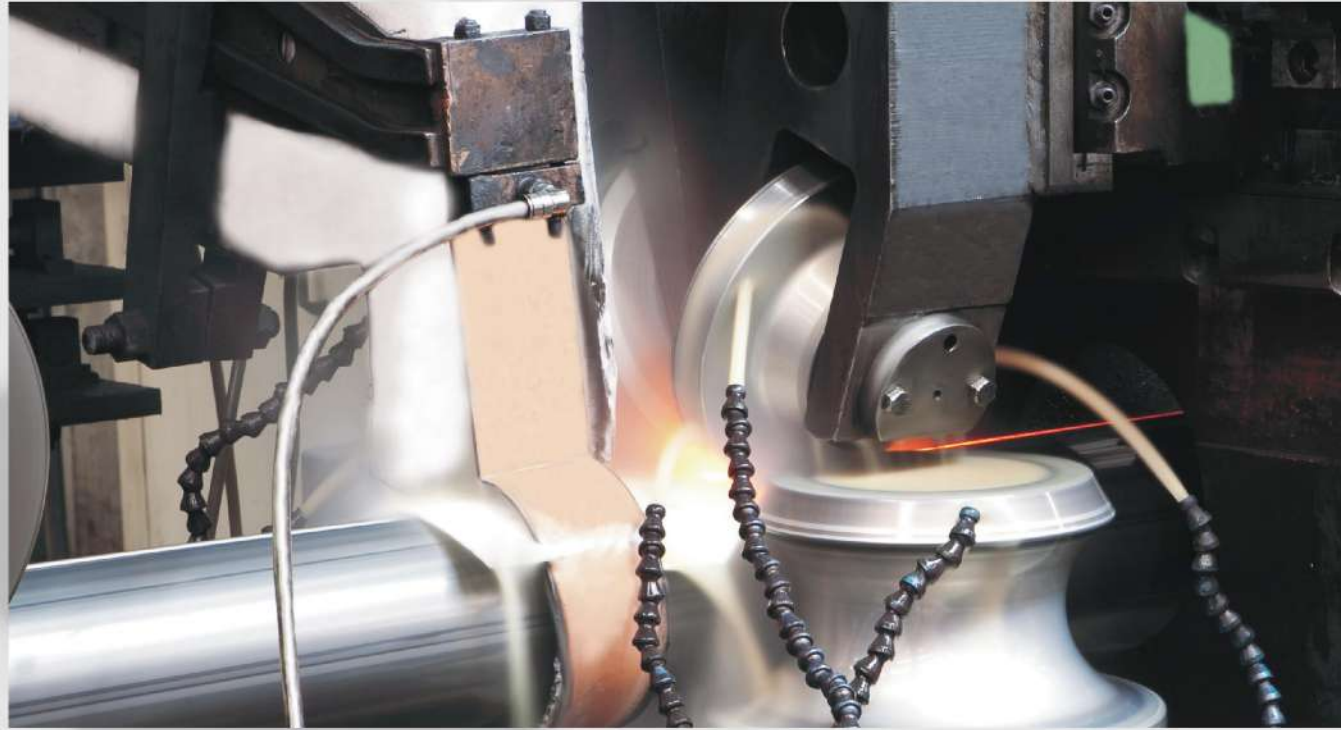
*: Typical Values.

1a: A.W.H.R. "as welded" from hot-rolled steel (with mill scale).

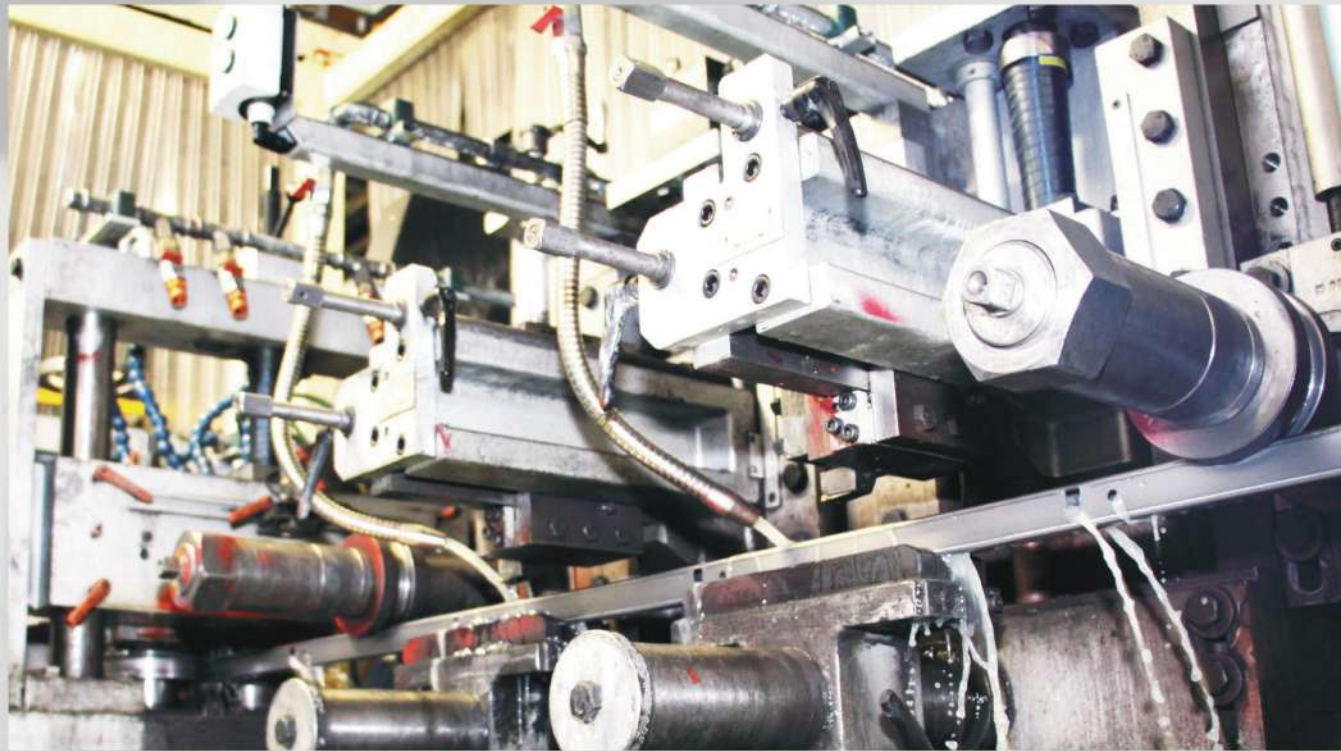
1b: A.W.P.O. "as welded" from hot-rolled pickled and oiled steel (mill scale removed).

2: A.W.C.R. "as welded" from cold-rolled steel.

ROLL FORMING



ERW TUBE MILL



PRE-PUNCHED

METAL FABRICATION



WELDING CELLS



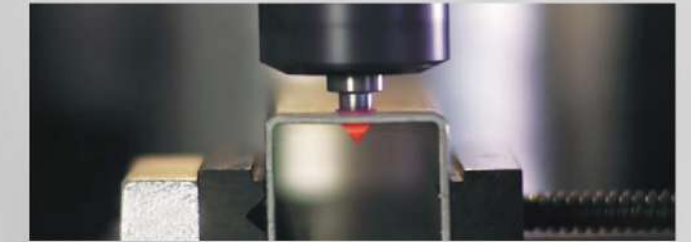
2D LASER CUTTING



CNC BENDING CURTAIN



SECTION ROLLING



FLOW DRILLING



SLITTER



REAMING & CHAMFERING



CNC SAW CUTTING



PUNCHING PRESS & BRAKE



CNC LASER TUBE CUTTING



MITER SAW



4D LASER CUTTING



CNC BENDING



IN-HOUSE LAB TESTS

- Impact
- Tensile
- Hardness
- Chemical Composition
- Dimensional
- Ultrasonic
- Metallographic
- Salt Spray

CERTIFICATIONS

- ISO 9001:2015
- IATF 16949:2016
- API 5CT-1704
- API 5L-1033
- API Q1-2381

USA

CUSTOMER SERVICE
HOUSTON, TX
Ph. +1 (281) 494 0900

MEXICO

HEADQUARTERS
ESCOBEDO, NL
Ph. +52 (81) 8154 0200

800 397 0000

072019 | The information in this document is subject to change without notice.



sales@prolamsa.com
www.prolamsa.com



PROLAMSA
GROUP

